



Oxygen Sensor Socket Set

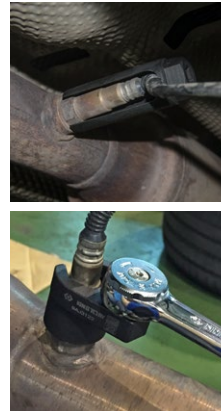
9AJ017

3/8"+1/2"

- 7 PC. special sockets for removing oxygen sensors
- Suitable for most vehicles : Volkswagen, BMW, PSA, Mercedes-Benz, Ford, etc...

2.33 1 / 10

KT NO.	Part.	Size	mm
9AJ4229		1/2"	29
9AJ3322		3/8"	22
9AJ4227		1/2"	27
9AJ3222		3/8"	22
9AJ3127		3/8"	27
9AJ4122		1/2"	22
9AJ3122A		3/8"	22

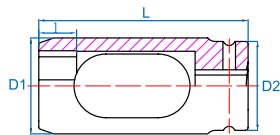


7 PC.

Diesel Injection Socket

9AN4128

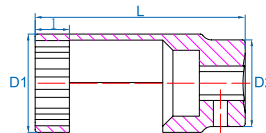
- Suitable for Alfa Romeo, Chrysler, Land Rover, Rover, etc...



KT NO.	mm	D1 mm	D2 mm	mm	L mm	339	5/60
9AN4128	28	38.1	35.2	15	83	339	5/60

9AN4227

- Suitable for BMW, Fiat, Ford, etc...

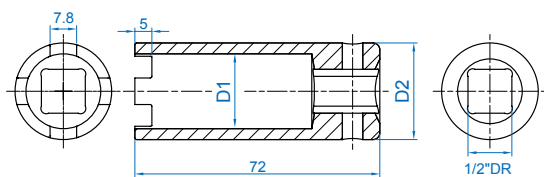


KT NO.	mm	D1 mm	D2 mm	mm	L mm	209	5/60
9AN4227	27	36.5	32.2	12.7	78	209	5/60

Man & Benz Truck Diesel Injection Valve Socket

9AN43

- The tool is designed to remove and install diesel injection valve
- Application: MAN 422/403, BENZ Truck, SCANIA



KT NO.	D1 mm	D2 mm	Tooth	181	10 / 80
9AN43	22	28.4	4	181	10 / 80

